

**KANEPACKAGE PHILIPPINE INC.**

No. 5 Ring Road LISP II, Brgy. La Mesa, Calamba City, Laguna
Telephone No. (049) 545-7166 to 69
Fax No. (049) 545-6302

INVESTIGATION REPORT

Prepared By:

Check By:

Approved By:

DATE:

221202

MHVITO

QA-IE/ Prodn IE

QA/ Prodn SV

KPLIMA Operations Gen. Mngr.

5M REVIEW

MAN	
MACHINE	LOOSE SCREW AT SANDWITCH CONVEYOR
MATERIAL	
METHOD	
ENVIRONMENT	

Affected Document:

Procedure Manual

Work Instruction

Process Flow

Forms

Date Reviewed:

Disposition:

☐ With Revision ☒ No Revision☐ With Revision ☒ No Revision☐ With Revision ☒ No Revision☐ With Revision ☒ No Revision

PIC:

MH.VITO

MH.VITO

MH.VITO

MH.VITO

Target Date:

I. PROBLEM DESCRIPTION**1.1. ISSUE:**

DAMAGED

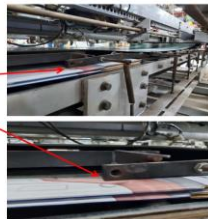
1.2. ITEM DESCRIPTION:

PART CODE:

516228200

PART NAME:

LIONEL2 FAL EUROPE

1.3. BACKGROUND:**PICTURE****DETAILS:**

> Damaged occurred on the bottom flap of the item (see attached photo beside)

> Lot qty.: 704 EA

> Good Qty.: 669 EA

> Reject qty.: 35 EA

> Reject Percentage: 7.97%

II. IMMEDIATE ACTION

ACTION ITEMS	Target Date:	Person In-charge
Re-orient the operator re regarding to the issue of damaged	221124	IE/SUB-LEADER

III. WHY WHY ANALYSIS DETAILS:**DIRECT CAUSE:**

WHY 1: DAMAGED OCCUR AT SEMI-AUTO GLUING MACHINE 3

WHY 2: SCRATCHES OCCUR AT THE SANDWITCH CONVEYOR.

WHY 3: THE SCREW WAS LOOSE AND THE SHAFTING BRACKET HANGING TO THE ITEM WHILE PASSING AT THE CONVEYOR.

INDIRECT CAUSE:

WHY 1: CHECKING OF THE MACHINE DURING MACHINE SET-UP

WHY 2: THEY DID'NT NOTICE THAT THE SCREW FROM SANDWITCH CONVEYOR UPPER PART WAS LOOSE ITS SHAFTING BRACKET.

WHY 3:

IV. ACTION PLAN:**DIRECT CAUSE:**

> ORIENT THE OPERATOR REGARDING TO THE ISSUE OF DAMGED CAUSED HANGING SHAFTING BRACKET ON THE ITEM.

> REQUEST REPAIR (ALIGNMENT OF SANDWITCH CONVEYOR) FOR ENGINEER PIC

**INDIRECT CAUSE:**

> ORIENT THE OPERATOR REGARDING TO THE ISSUE OF DAMGED CAUSED HANGING SHAFTING BRACKET ON THE ITEM.